

# AzuRe301



**Descrição:** Azulejo hispano-mourisco.

Dimensões: 138 x 140 x 23 mm

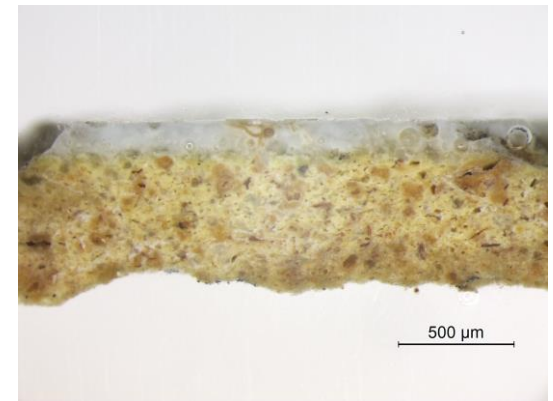
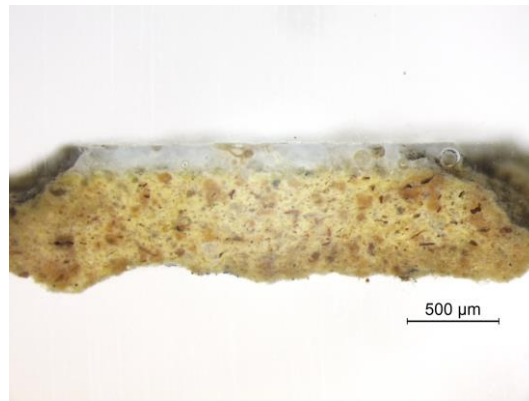
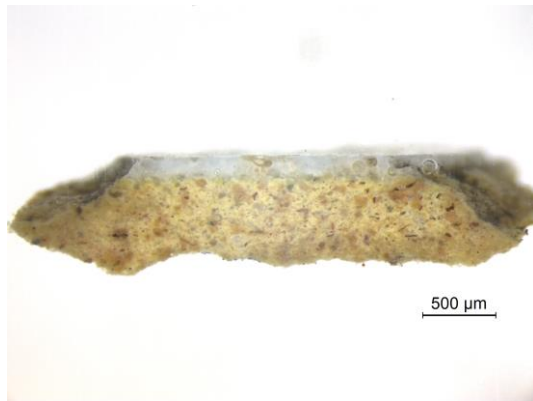
**Amostras:** Azulejo e uma secção polida em depósito no *Museu Nacional do Azulejo* em Lisboa.

# Índice

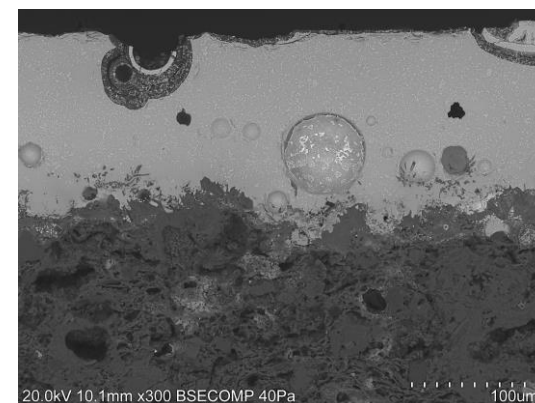
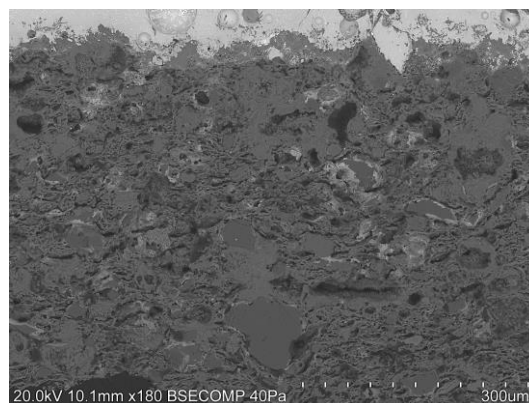
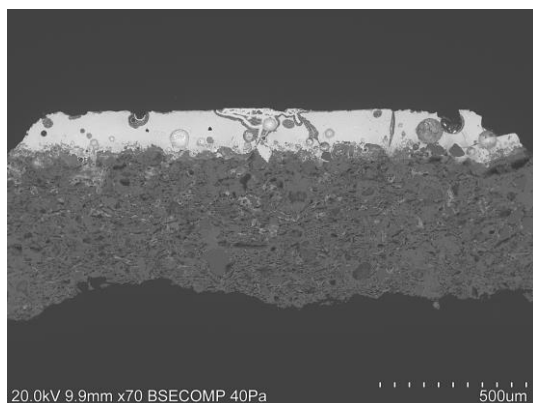
- **Caracterização Morfológica**
  - ✓ Imagens de microscopia ótica (OM)
  - ✓ Imagens de microscopia electrónica (SEM)
- **Caracterização Química/Mineralógica**
  - ✓ Análise por SEM/EDS
  - ✓ Análise por XRF

AzuRe301

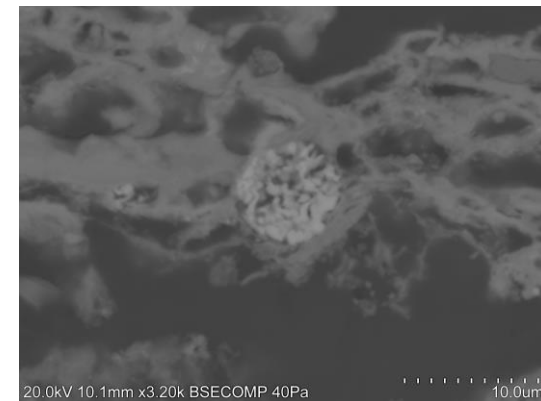
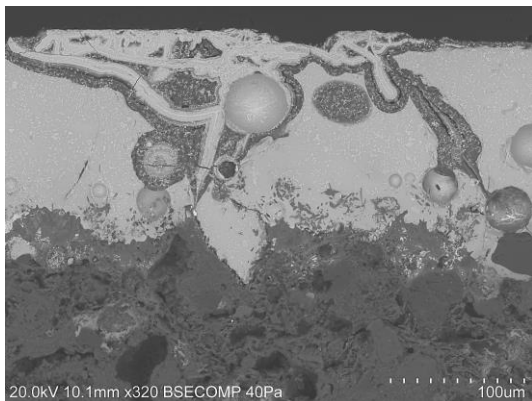




Equipamento: Lupa binocular Leica M205 C com câmara acoplada Leica DFC295.

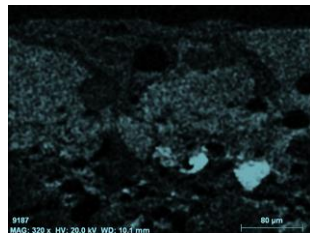
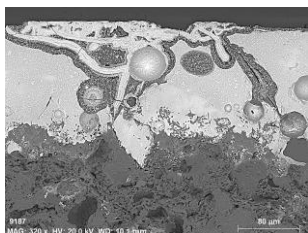


**Equipamento:** Microscópio eletrónico de varrimento HITACHI 3700N acoplado a um espectrómetro de energia dispersiva de raios-X Bruker Xflash 5010.

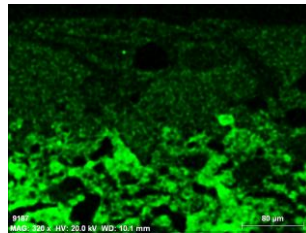


**Equipamento:** Microscópio eletrónico de varrimento HITACHI 3700N acoplado a um espectrómetro de energia dispersiva de raios-X Bruker Xflash 5010.

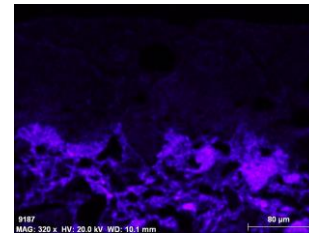
# AzuRe301 Caracterização Química: ANÁLISE POR SEM/EDS



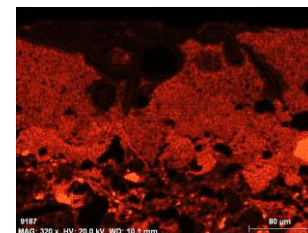
Na



Mg



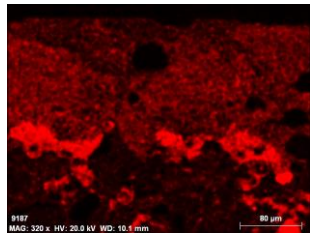
Al



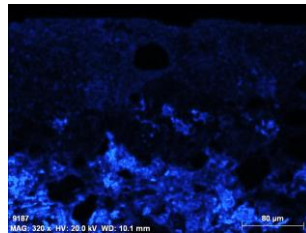
Si



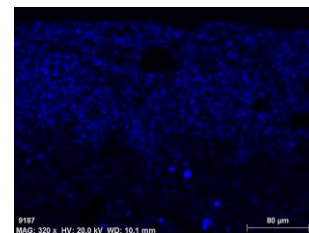
P



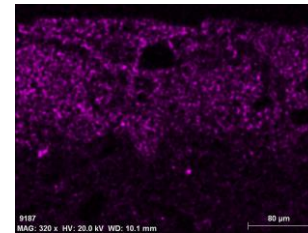
K



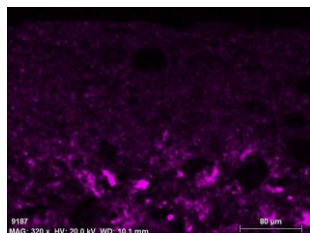
Ca



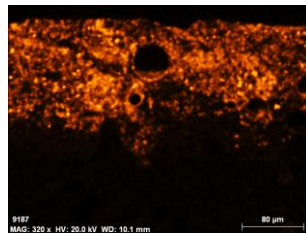
Ti



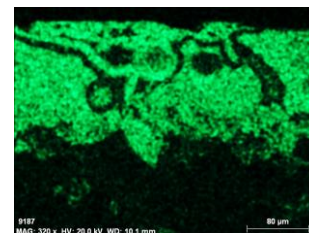
V



Fe



Sn

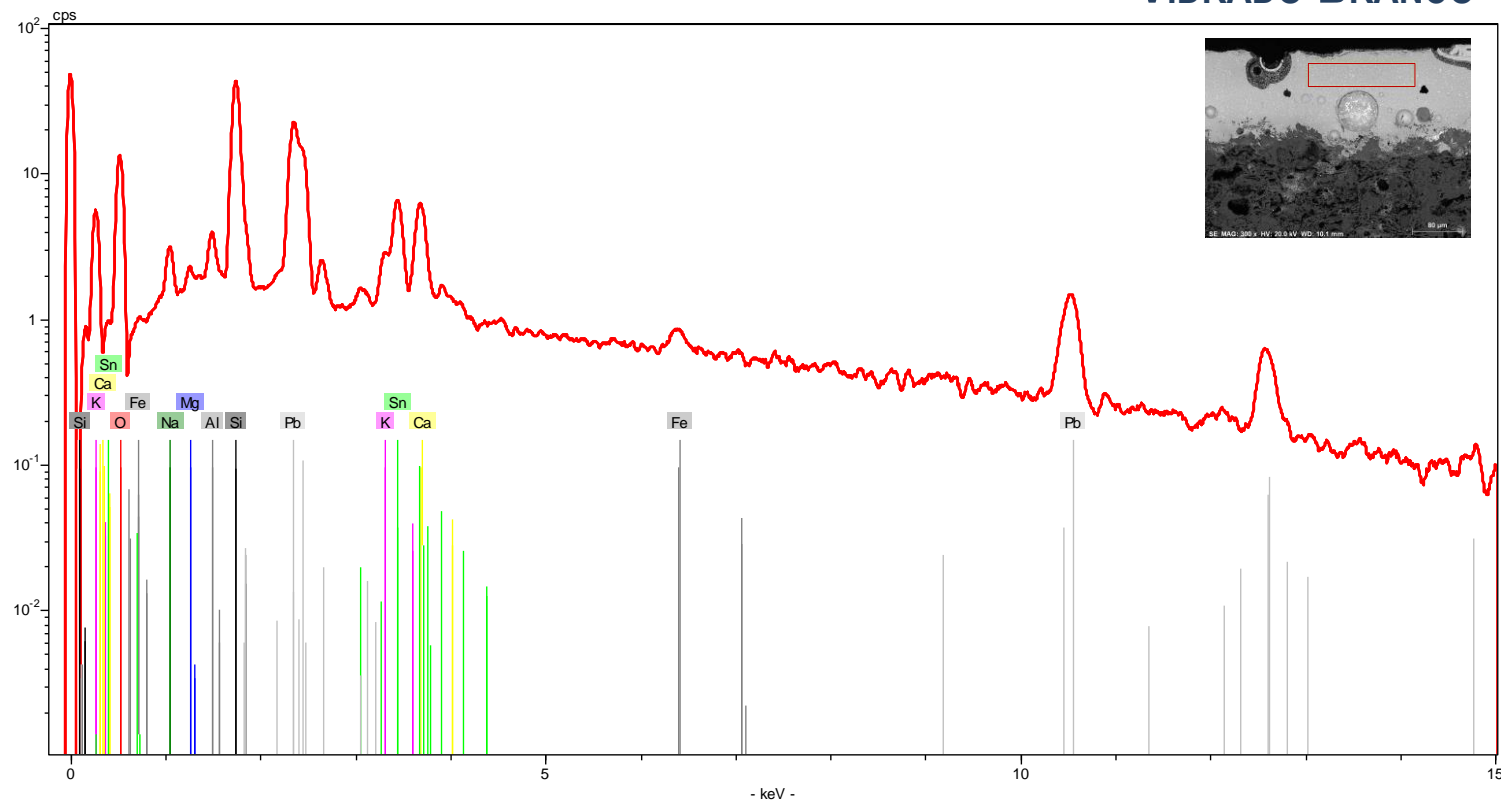


Pb

**Equipamento:** Microscópio eletrônico de varrimento HITACHI 3700N acoplado a um espectrómetro de energia dispersiva de raios-X Bruker Xflash 5010.

# AzuRe301 Caracterização Química: ANÁLISE POR SEM/EDS

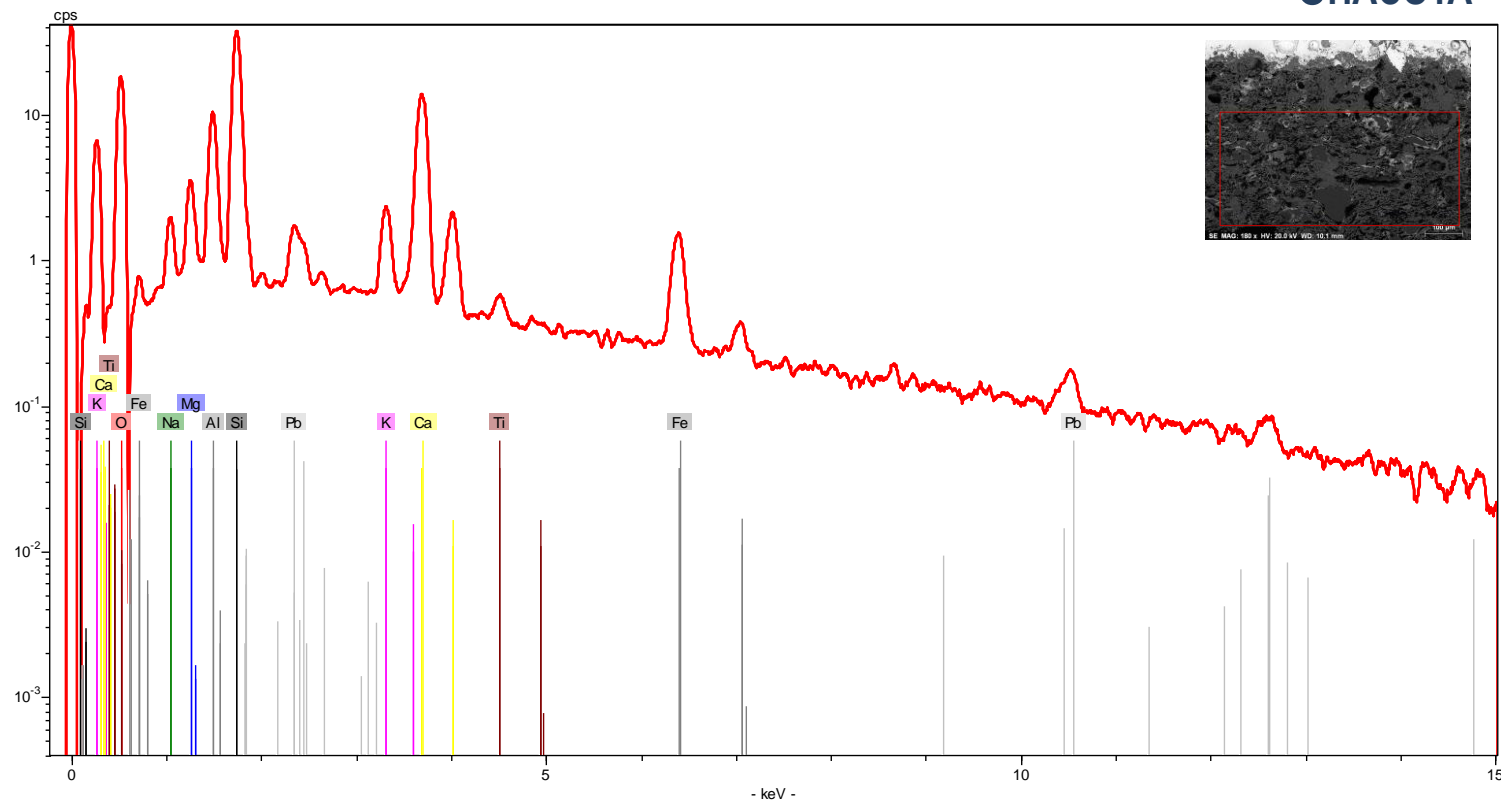
## VIDRADO BRANCO



[AzuRe301 EDS Vidrado.xls](#)

**Equipamento:** Microscópio eletrónico de varrimento HITACHI 3700N acoplado a um espectrómetro de energia dispersiva de raios-X Bruker Xflash 5010.

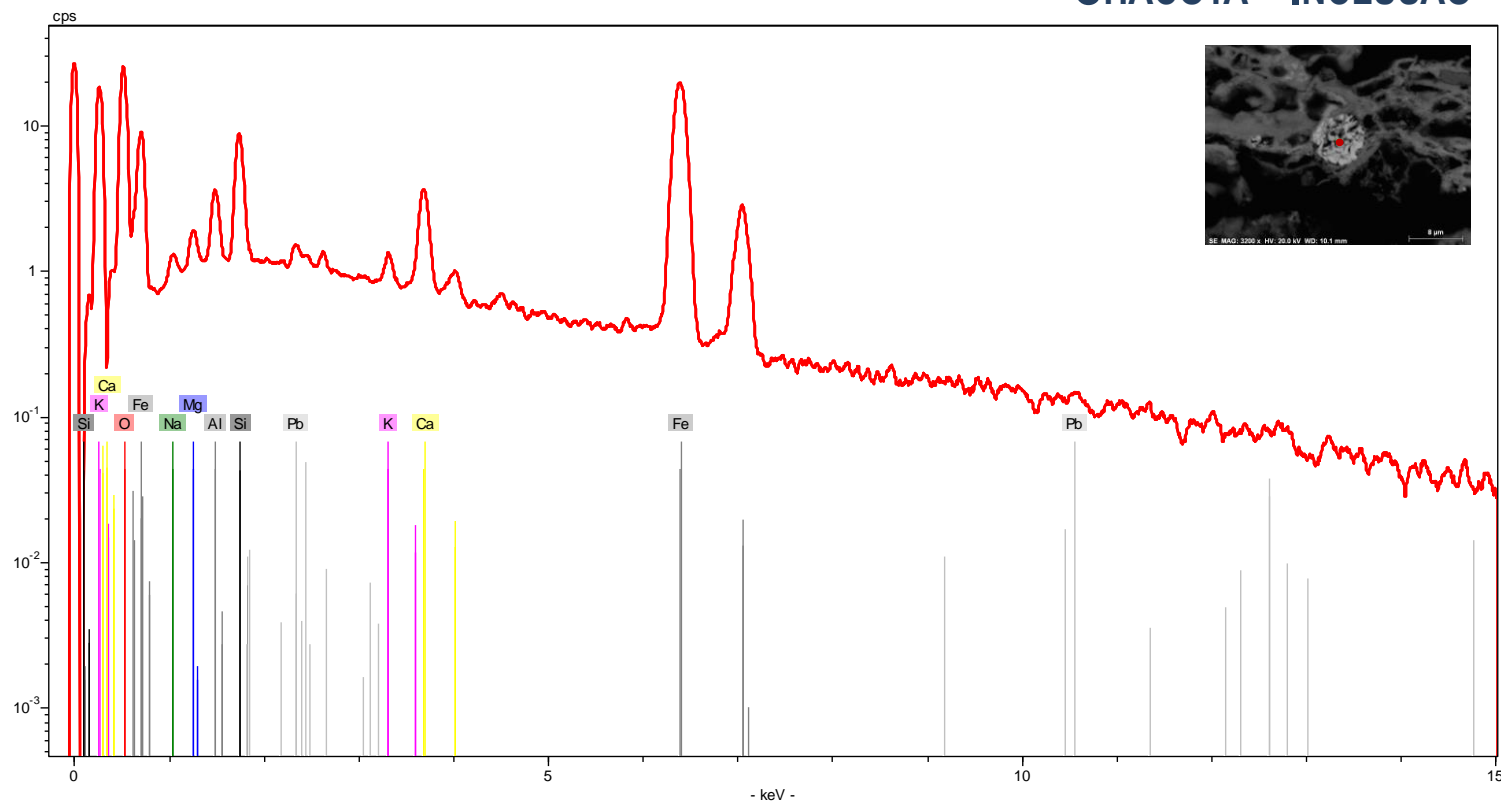
CHACOTA

[Azure301 EDS Chacota.xls](#)

**Equipamento:** Microscópio eletrónico de varrimento HITACHI 3700N acoplado a um espectrómetro de energia dispersiva de raios-X Bruker Xflash 5010.



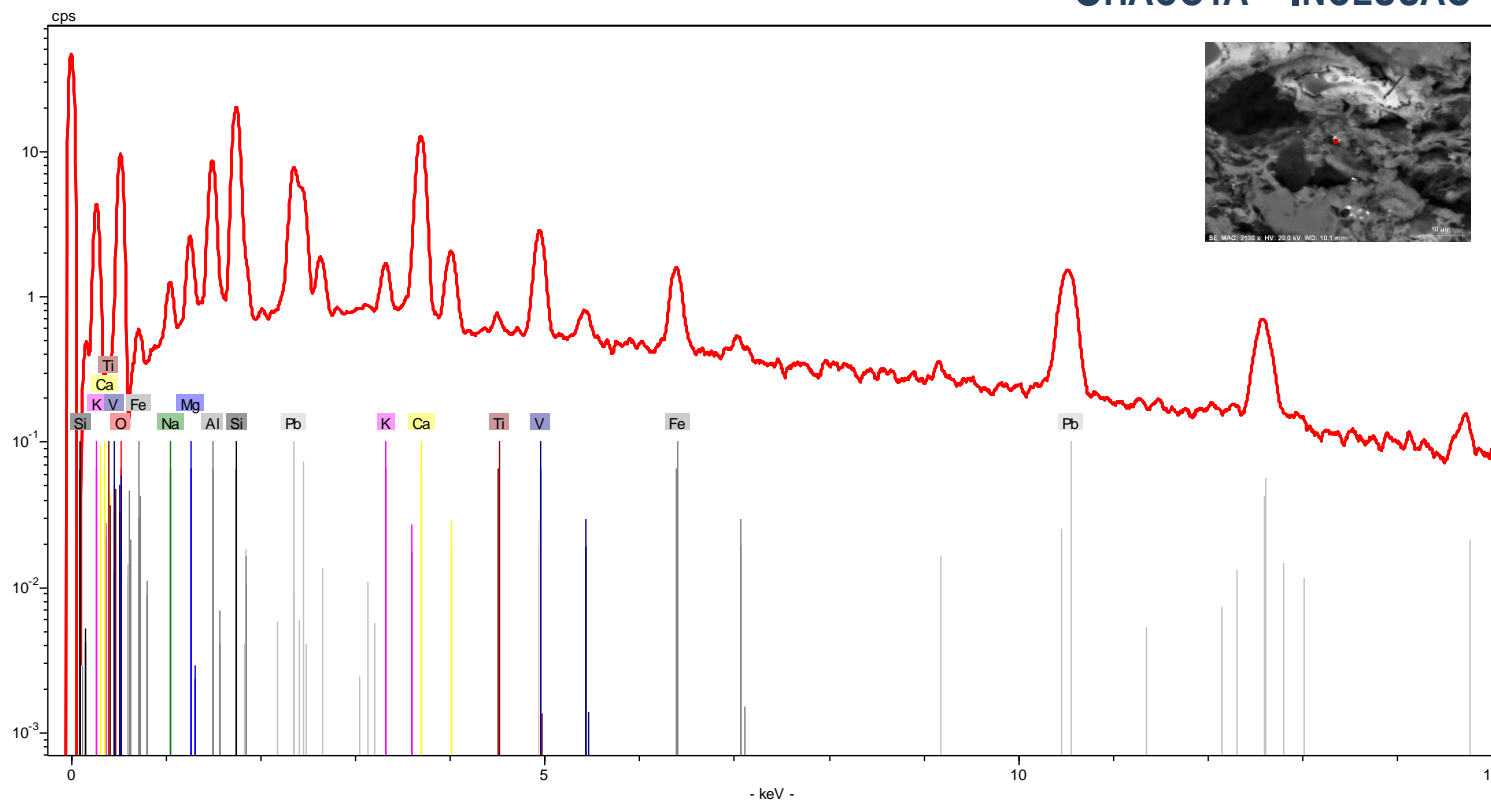
## CHACOTA - INCLUSÃO



[Azure301 EDS Inclusão1.xls](#)

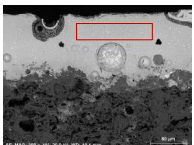
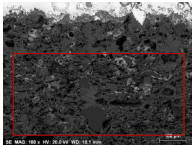
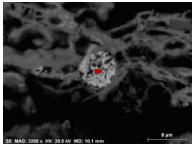
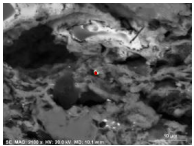
**Equipamento:** Microscópio eletrónico de varrimento HITACHI 3700N acoplado a um espectrómetro de energia dispersiva de raios-X Bruker Xflash 5010.

## CHACOTA - INCLUSÃO



[Azure301 EDS Inclusão2.xls](#)

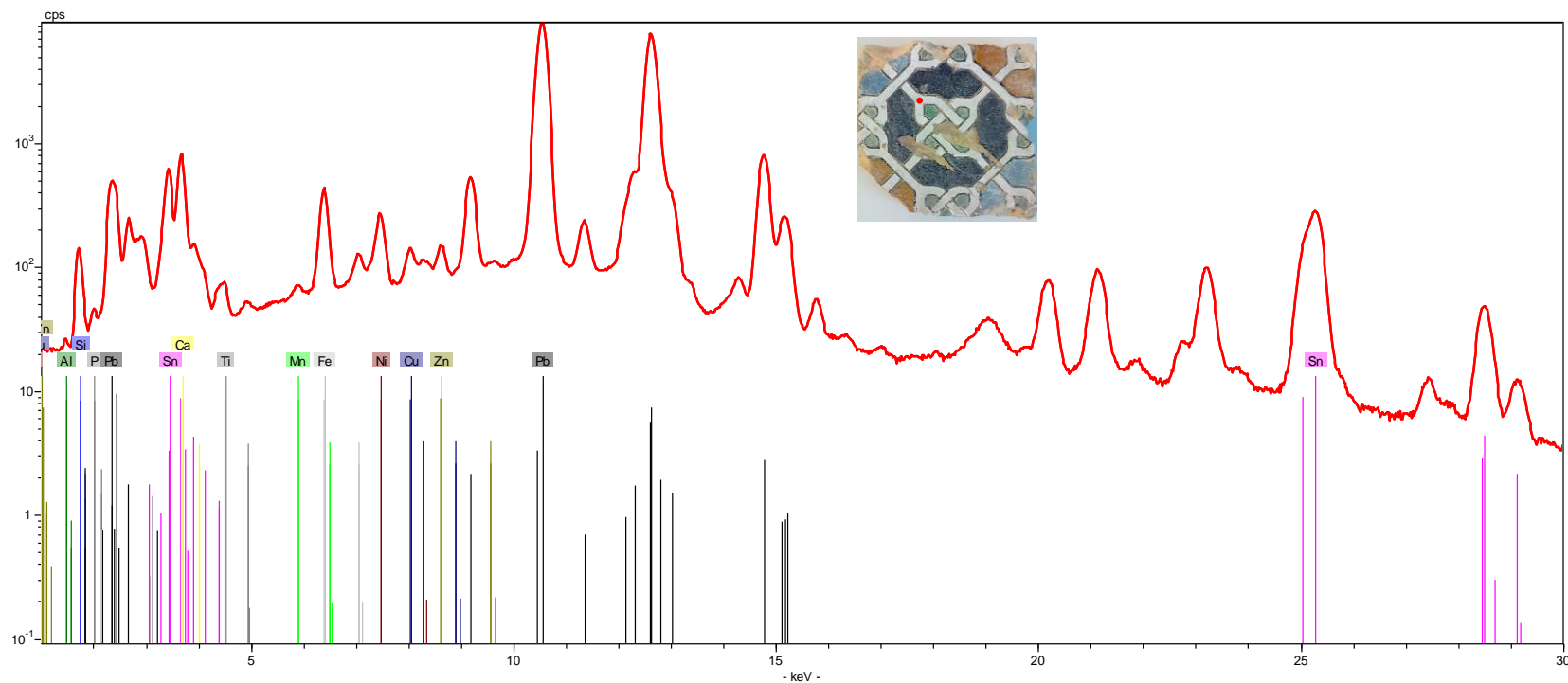
**Equipamento:** Microscópio eletrónico de varrimento HITACHI 3700N acoplado a um espectrómetro de energia dispersiva de raios-X Bruker Xflash 5010.

Área Analisada	Composição química (% m/m)*										
	Na	Mg	Al	Si	K	Ca	Ti	V	Fe	Sn	Pb
 vidrado branco	2,66	0,76	1,48	19,67	1,71	3,57	--	--	1,51	15,20	53,44
 chacota	2,89	3,82	10,48	31,81	3,09	27,36	0,99	--	6,78	--	12,79
 chacota – inclusão	2,82	2,17	3,07	5,68	0,58	3,84	--	--	68,43	--	12,79
 chacota – inclusão	0,42	1,09	5,17	10,25	1,20	17,75	0,32	5,22	4,30	--	54,27

\* - Os valores apresentados na tabela correspondem às percentagens mássicas dos elementos detetados na amostra, não considerando o teor de oxigénio e normalizados a 100% ([ver aviso](#)).

**Equipamento:** Microscópio eletrónico de varrimento HITACHI 3700N acoplado a um espectrómetro de energia dispersiva de raios-X Bruker Xflash 5010.

## VIDRADO BRANCO

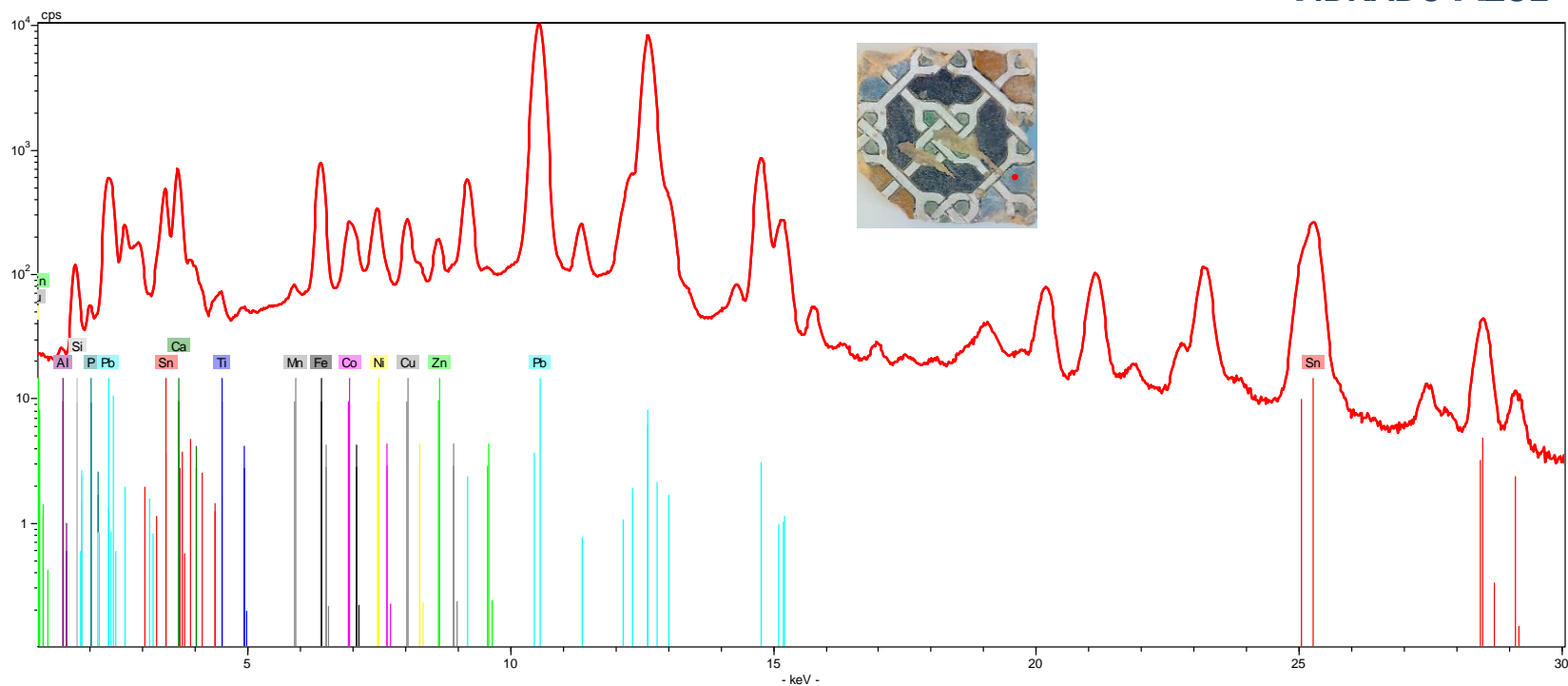


[Azure301\\_XRF\\_Branco.csv](#)

**Equipamento:** Espectrómetro portátil por fluorescência de raios-X Bruker Tracer III-SD.

# AzuRe301 Caracterização Química: ANÁLISE POR XRF

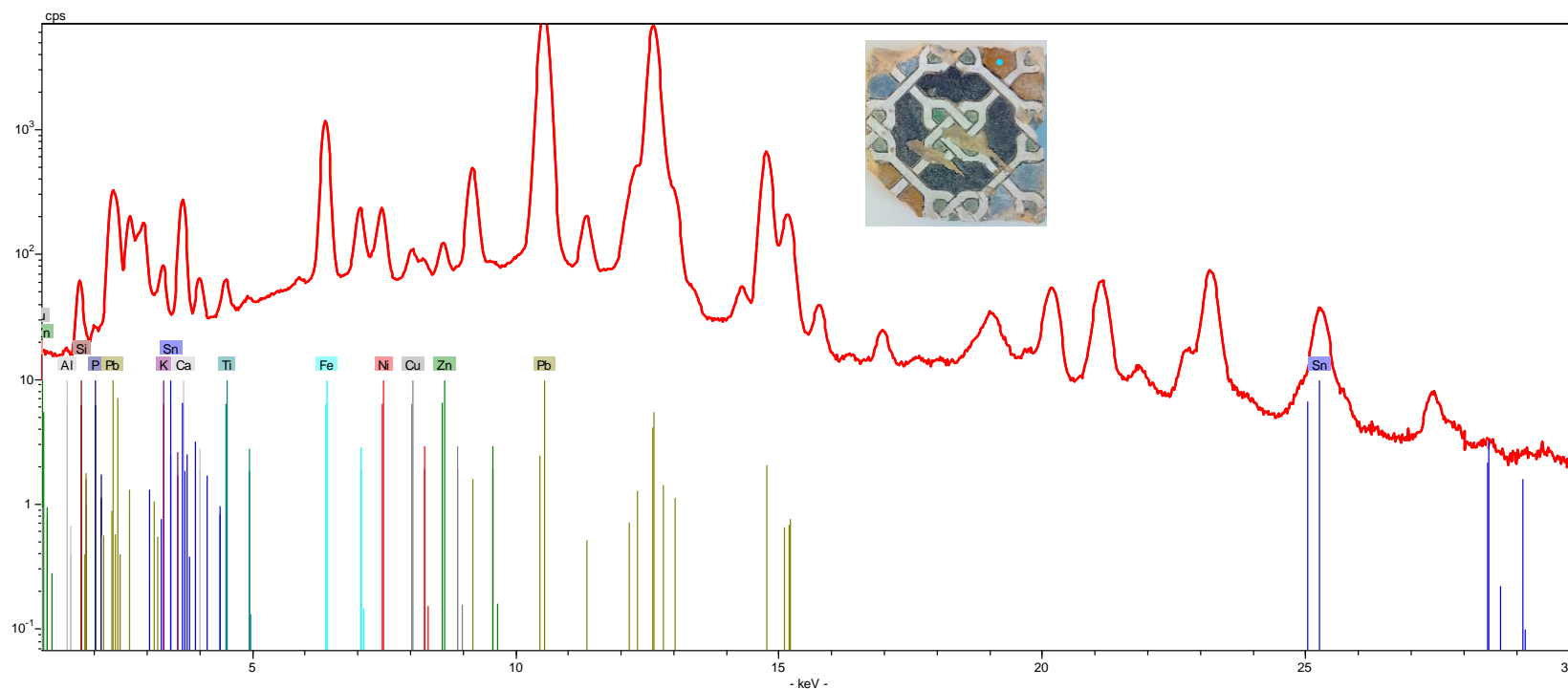
## VIDRADO AZUL



[AzuRe301\\_XRF\\_Azul.csv](#)

**Equipamento:** Espectrómetro portátil por fluorescência de raios-X Bruker Tracer III-SD.

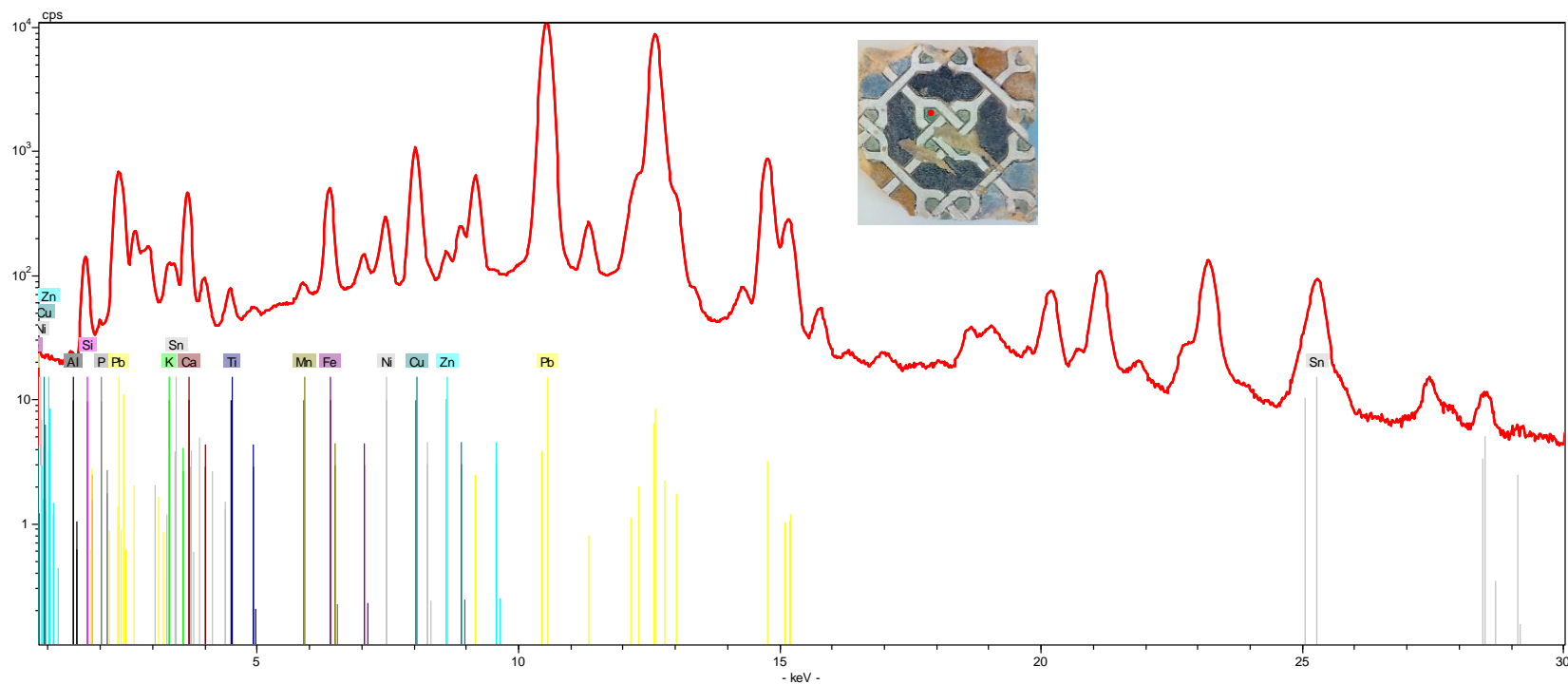
## VIDRADO AMARELO



[Azure301\\_XRF\\_Amarelo.csv](#)

**Equipamento:** Espectrómetro portátil por fluorescência de raios-X Bruker Tracer III-SD.

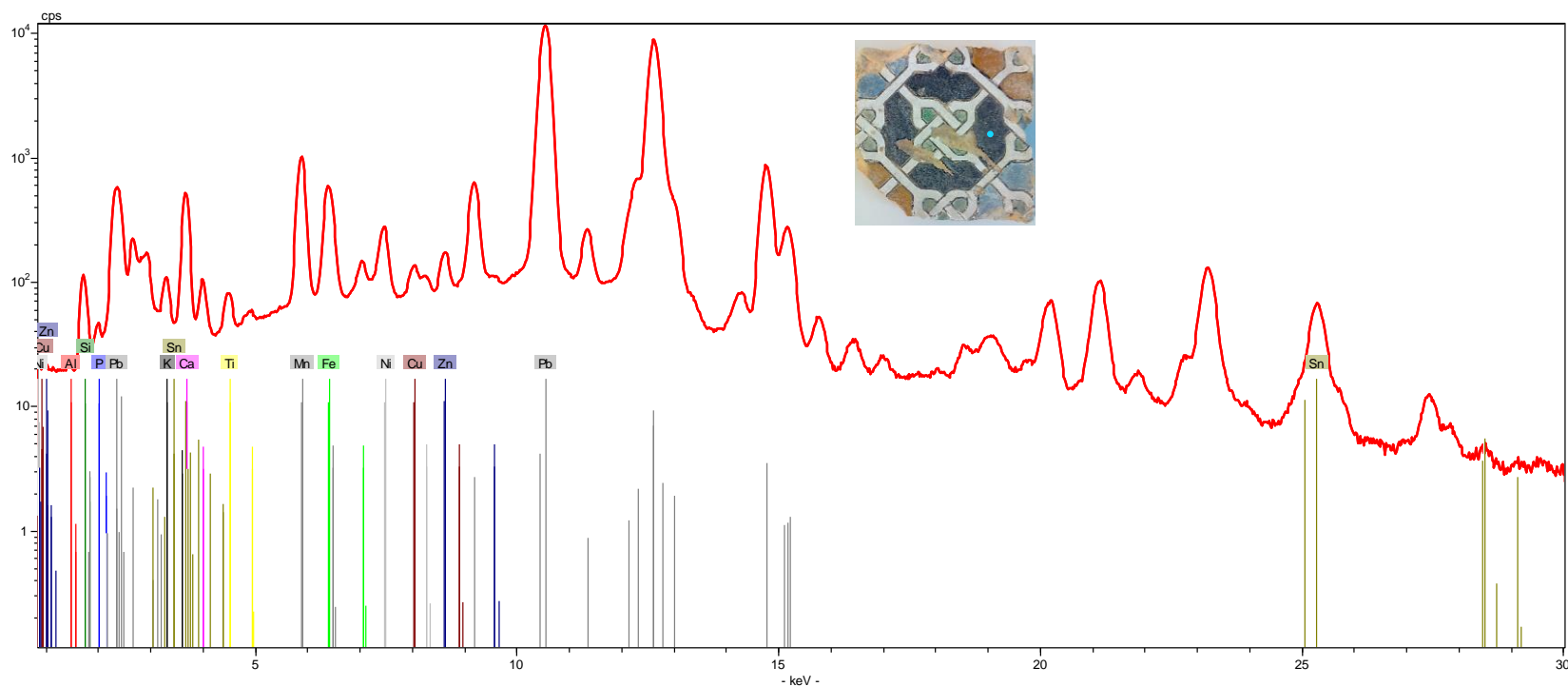
## VIDRADO VERDE



[AzuRe301\\_XRF\\_Verde.csv](#)

**Equipamento:** Espectrómetro portátil por fluorescência de raios-X Bruker Tracer III-SD.

## VIDRADO CASTANHO



[AzuRe301\\_XRF\\_Castanho.csv](#)

**Equipamento:** Espectrómetro portátil por fluorescência de raios-X Bruker Tracer III-SD.